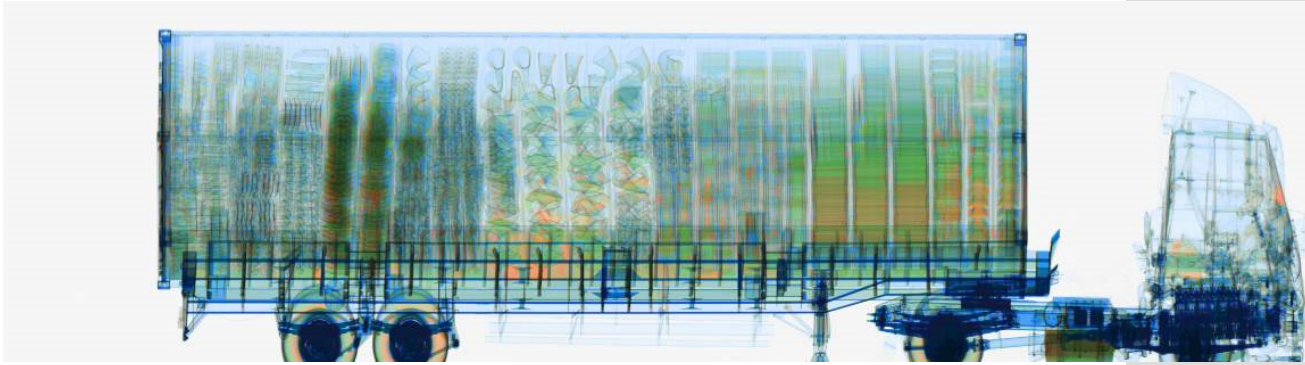




# NUCTECH™ MB1215HS Relocatable Container/Vehicle Inspection System



## Technical Data

Type of X-ray source	Interlaced Dual-energy Electron Linear Accelerator
X-ray energy	6/3 MeV
Penetration	340 mm steel
Material discrimination function	Organic material inorganic material and mixture can be distinguished and marked by specified colors
Max. dim. of scanned vehicle	20 m (L) × 2.6 m (W) × 4.7 m (H)
Scanning method	Scanned objects keep still and the scanning system moves
Power consumption	≤ 60 kVA
Computer monitor	24" LCD monitor or better
Printer	Color laser printer
Scanner	A4 scanner
Image analysis	Pseudo color transformation; filter; suspicious item mark and comments; multi image comparison; area calculation; user define macro; image format transformation, etc.
Zoom	1/4 x, 1/2 x, 1x, 2x, 4x, 8x, 16x
Image acquisition mode	Real-time, synchronized
Operator number	5
Scanning speed	0.2 m/, 0.4 m/s

NUCTECH COMPANY LIMITED  
Address: 2/F Block A, Tongfang Building,  
Shuangqinglu, Haidian District,  
Beijing 100084, P.R.China  
Tel: +8610 50980999  
Fax: +8610 62788896  
[Http://www.nuctech.com](http://www.nuctech.com)

NUCTECH COMPANY LIMITED, All Rights reserved.  
Design and specifications are subject to change without notice.



NUCTECH HAS BEEN AWARDED THE CERTIFICATE OF QUALITY MANAGEMENT SYSTEM (ISO9001:2015)  
NUCTECH HAS BEEN AWARDED THE CERTIFICATE OF ENVIRONMENTAL MANAGEMENT SYSTEM (ISO14001:2015)  
NUCTECH HAS BEEN AWARDED THE CERTIFICATE OF OCCUPATIONAL HEALTH AND SAFETY MANAGEMENT SYSTEM (GB/T28001-2011)

